

# INFORMATION PACK

---

CHÂTEAU DE LA COURONNE

# THE CHÂTEAU

---

## FACILITIES

Pool table, cinema room, Chandelier bar, swimming pool, outdoor ping pong table, football pitch, garden games.

## ESSENTIALS

Air-conditioning, WiFi, guest printer, first aid kit, iron & ironing board. Highchairs & cribs available upon request.

## THE PANTRY

The Pantry is available for staying guests for snacking between catering. Includes tea/coffee facilities, toaster, fridge and microwave.

## THE CHANDELIER BAR

Open during events offering a range of local wines, champagnes, beers, spirits and mixers.

## BEDROOM AMENITIES

Coffee machine, hairdryer, toiletries, bath & pool towels (for staying guests). Bridal suites include mannequin, suit stand, steamer and stocked mini bar.

## CHÂTEAU BEDROOMS

Sleeping areas for up to 24 people. All bedrooms have king or queen size beds. Three bedrooms contain two beds sleeping up to 4 including one family suite with a shared bathroom.

## COACH HOUSE

Coach House - Sleeping up to 10 people. Courtyard apartment with 5 king bedrooms, 2 bathrooms, lounge, kitchen and dining room.

## GARDEN SUITE

Garden Suite - Sleeping up to 5 guests. 2 double bedrooms, one with an optional additional single bed, 1 bathroom, small lounge area and garden terrace.



# FAQs

---



## FOOD & BEVERAGE?

The Château features an onsite catering team to cater for the duration of your stay. External caterers are not permitted

## SELF-CATERING?

The Château is a catered venue therefore we do not offer self-catering

## MENU TASTING?

Confirmed bookings receive a complimentary menu tasting directly with our Wedding Day caterers based in Angoulême (subject to availability)

## CAN WE EAT OUTSIDE?

Outside dining in the courtyard or gardens is available

## IS THERE A BAR?

The chandelier bar is the primary bar. The garden bar is available for outside events

## CORKAGE?

If you wish to choose your own wines and Champagnes for the cocktail reception and during the wedding meal, a small corkage will apply. Drinks for the rest of your stay must be purchased from the Château.

## DRINKS PACKAGES/ OPEN BAR?

We offer various drink packages and pre-paid bar options with customizable limits on singles, doubles, shots, and more.

## CHILDREN PRICES?

Children's prices are an average of 40% less

## ALLERGIES?

We accommodate most allergies & intolerances with advance notice

# FAQs

---

## VENUE EXCLUSIVITY?

The Château is exclusively yours for the duration of your stay.

## CAPACITY?

Accommodation: Up to 39 people

Ceremony (Inside): Up to 120 people

Ceremony (Outside): Up to 500 people

Seated Dinner (Inside): Up to 80 people

Seated Dinner (Outside): Up to 500 people

## WEDDING PLANNER?

The Château requires a professional wedding for all weddings. A list of planners are provided upon booking.

## MINIMUM SPEND?

A minimum spend is required.

## DISABLED ACCESS?

Ground floor accommodation and accessible bathroom facilities available

## CHECK-IN / CHECK-OUT?

Check-in: Friday 4pm

Check-out: Monday 11am

## DEPOSIT / PAYMENT PLAN?

The deposit secures the booking and it is non-returnable. Payment plans are available

## MIDWEEK WEDDINGS?

Weekend availability only, Friday - Monday

## AIR-CONDITIONING?

All bedrooms feature air-conditioning

## SWIMMING POOL?

A large swimming pool is available

## PLAN B - BAD WEATHER?

The Banquet Hall serves as a backup option, seating up to 120 guests for a ceremony and 80 for dinner, while the Drawing Room can accommodate up to 70 guests for a ceremony.

## CHURCH NEARBY?

The village has a Catholic church and a Christian church nearby in Montbron (residency requirements apply for legal marriage in France)

## CELEBRANT ON-SITE?

Your wedding planner will arrange a celebrant or priest or a member of your wedding party may officiate

## DOGS ALLOWED?

Well-behaved dogs are welcome. Maisie, the Château's Cavachon, loves making new friends!

## DINNERWARE INCLUDED?

Dinnerware is included. For weddings exceeding 80 people, additional dinnerware will need to be hired

## TABLES AND CHAIRS?

Tables and chairs are included. For weddings exceeding 80 people, additional tables and chairs will need to be hired

## PA SYSTEM?

The Château does not provide this service; it's recommended to hire a DJ

## FIREWORKS?

Category F2 fireworks are permitted and must be performed by a professional

# HOW TO GET TO US

---

Château de la Couronne is in southwest France, on the Charente-Dordogne border. It's a 25-minute drive from Angoulême, which offers high-speed train connections. The nearest airport is in Limoges, about an hour away, with international airports in Bordeaux and Paris.

## AIRPORT

The nearest airports; Limoges, Bergerac, Poitier, Bordeaux, Paris

## CAR HIRE

Available at all airports and city centres. Pre-booking is recommended from companies such as Buggs, Enterprise, Sixt, etc.

## TAXI

Angouleme Radio Taxis [www.angouleme-radio-taxis.com](http://www.angouleme-radio-taxis.com)

Tel: 00 33 (0) 5 45 95 55 55 | Email: [angouleme-radio-taxis@live.fr](mailto:angouleme-radio-taxis@live.fr)

## TRANSFER

ASF Travel

[www.asftravel.com](http://www.asftravel.com)

Tel : 00 33 (0) 6 83 60 88 69 | Email: [asfribes@gmail.com](mailto:asfribes@gmail.com)

## MINI BUS:

Cars Robin / Cars de Maillard

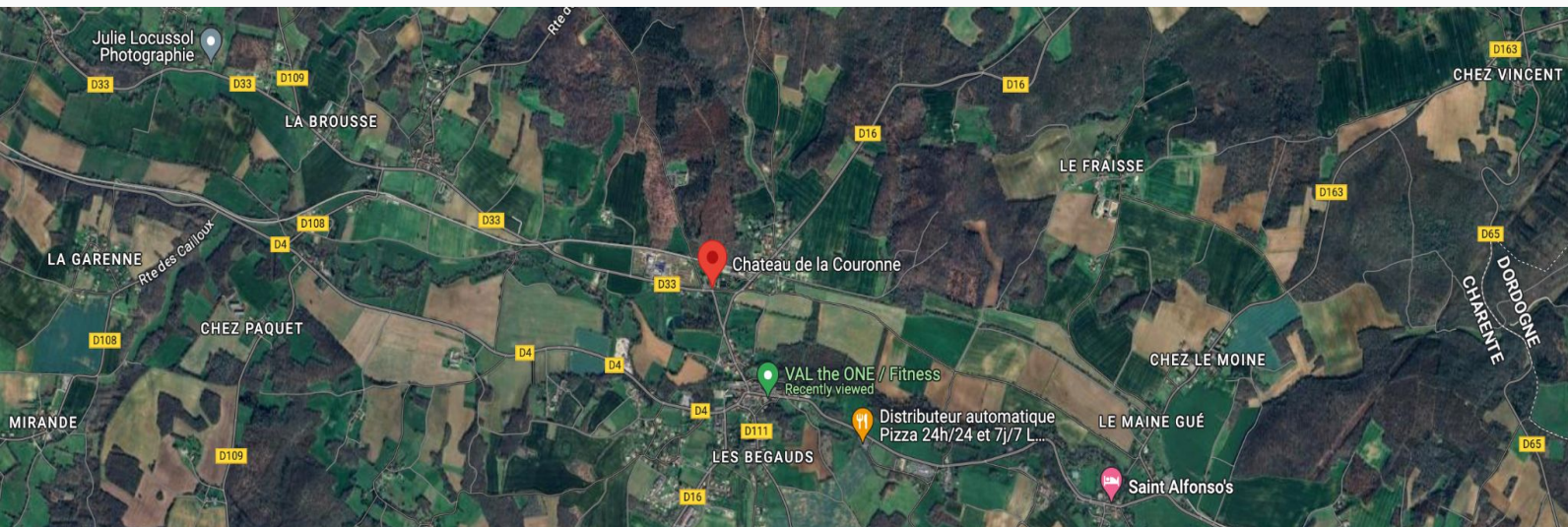
Tel: 0033 (0) 545680040

Email: [commercial@cars-demaillard.fr](mailto:commercial@cars-demaillard.fr) or [catherine.bethune@cars-robin.fr](mailto:catherine.bethune@cars-robin.fr)

## TRAIN

If arriving into Bordeaux or Paris, a high speed train is available into Angoulême which takes 30 minutes from Bordeaux city centre and 1hr45 from Paris. Then from Angoulême to the Chateau is a 25-minute drive/taxi.

Any transport required must be booked in advance. In rural France, we strongly recommend all taxis required are booked no less than 24 hours beforehand.



# NEARBY ACCOMMODATION

---

Villa Paignon



Chalet Suédois Cocooning



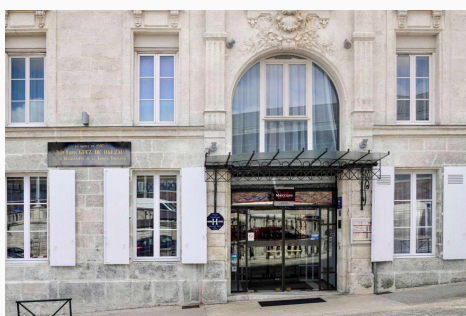
Château de Lavaud



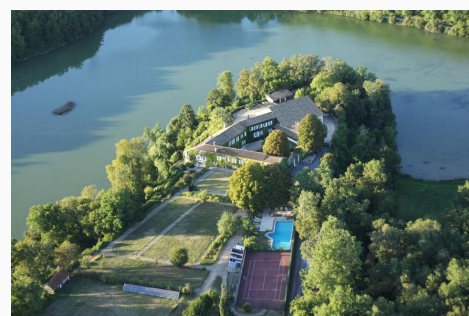
Hotel Le Saint Gelais



Mercure Angoulême



Domaine du Châtelard



Domaine des Etangs



Gîte avec piscine Chez Labaurie



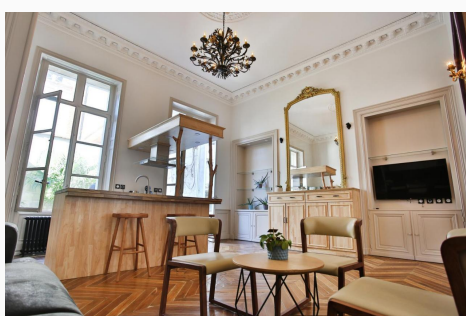
Château de Puymoger



DOMAINE DU CHATELARD



Meublés de l'Arsenal cœur de ville !



Charmant petit dortoir 3 places



# VILLAGE OF MATHON

---

There is ample accommodation in and around Marthon, either within walking distance or a short drive away. On the following page is a brief list of options in and around the village including the city of Angoulême (about 25 minutes from the Château).

New listings frequently appear on Booking.com, Airbnb, and Expedia, offering something for everyone—from luxury spa hotels with Michelin-starred restaurants to cozy cottages with private pools.

Villages within a 15 minute drive;

Feuillade, Saint-Germain-de-Montbron, Grassac, Souffrignac, Mainzac, Chazelles, Varaignes, Vouzan, Montbron, Charras, Vouthon, Eymouthiers, Hautefaye, Moulins-sur-Tardoire.

Pharmacy - 4 Rue Grand Rue +33 545702204

Petrol Station - Station essence 24/7

Pizzeria - Bouledogue Café | Bakery - La Gourmandine

Doctor - Ortega José - 5 Pl. de l'Ancienne Gendarmerie, +33 545702388

Beauty - L'atelier de Léa - Hairdresser | L'Hibiscus Nail Artist - Nails | Mademoiselle Cocoon - Beauty

Post & ATM - Bank: Crédit Agricole, Le Bourg | Post: O10 Place du Piegeonnier,

Supermarket - Marthon - Epicerie Marthonnaise | Montbron - Intermarche & Lidl | Soyaux - Carrefour & Grand Frais



# RESTAURANTS

---

LES CLUZEUX



LE LION ROUGE



LES SOURCES DE FONTBELLE ✨



MOULIN DE LA TARDOIRE ✨



GARDEN



AUBERGE DE VARAIGNES



CHEZ PAUL



LA COUR



LA TOSCANE



DOMAINE DU CHATELARD



LA CIGOGNE



AUMI ✨





# PLACES TO VISIT

---

BRANTOME



COGNAC



BERGERAC



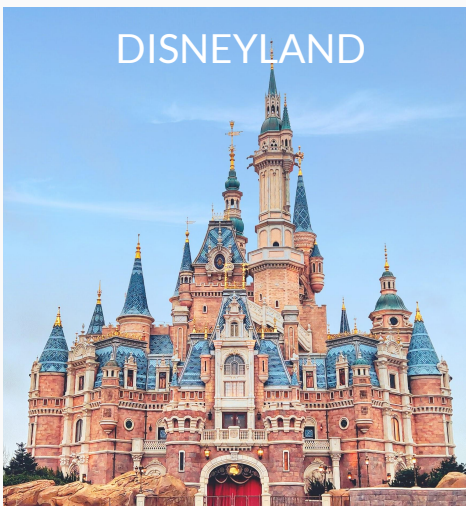
BORDEAUX



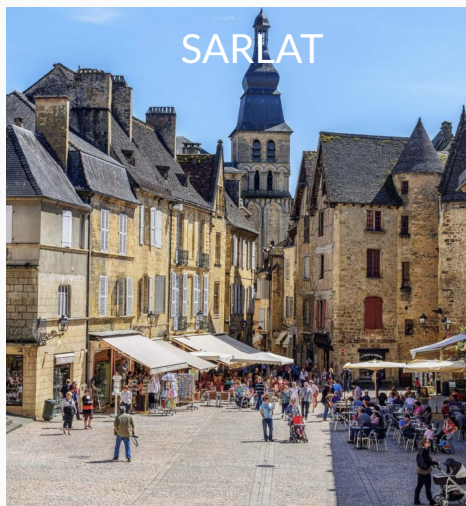
ANGOULÊME



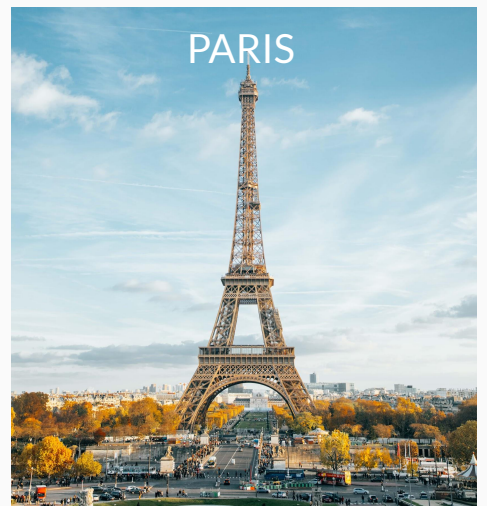
DISNEYLAND



SARLAT



PARIS



# NEARBY THINGS TO DO

---

WINE TASTING



HORSE RIDING



BEACH LAKE



TRAIL WALKS



THE COAST



COGNAC TOURS



CHÂTEAU TOURS



GOLF



BIKE RIDES



# CHÂTEAU DE LA COURONNE

---

*Merci*