



ALL YOU NEED TO KNOW

INFORMATION BOOKLET

CHÂTEAU DE LA COURONNE



Getting There

Location

The Château is located in the Charente region, close to the Dordogne border. The full address is: Château de la Couronne, Marthon, 16380, France

Driving

If travelling within Europe, driving is a great way to explore France and can eliminate the need for a rental car. From the UK (except Northern Ireland) you can travel via the Dover to Calais ferry or the Eurotunnel, Ferries from Hull or Portsmouth (overnight available) are also an option.

Flying

Regular flights are released 3 - 6 months in advance. Nearby airports (1 - 2 hours away) include Limoges (nearest), Bordeaux, Bergerac, Poitiers & Paris. Use SkyScanner or Google Flights to compare options. For Limoges, Poitiers, or Bergerac, a rental car is recommended due to limited transport. Alternatively, fly into Bordeaux or Paris, take a train to Angoulême, then a 30-minute taxi/drive to the venue. Book train tickets via Trainline.

Train

It's easy to travel by train including the Eurostar from London to Paris for those travelling from the UK (except Northern Ireland) where you can then take the high-speed train to the nearby city of Angoulême which takes just 1 hr 45 mins from Paris. It's then a 30-minute taxi/drive from Angoulême to the venue. Train tickets can be booked through websites/apps such as trainline.

Taxis & Transport

Taxis - Pre-booking required | Angoulême Radio Taxis +33 5 45 95 55 55 | angouleme-radio-taxis@live.fr

Taxi & Airport Transfers - Door-to-door service | ASF Travel +33 6 83 60 88 69 | asfribes@gmail.com

Car Hire - The most convenient option | Available at all airports and cities. Booking in advance is advised

Mini Bus Hire - For group transport | Cars de Maillard +33 5 45 68 00 40 | catherine.bethune@cars-robin.fr



Amenities

+

Facilities

Leisure & Entertainment: Pool table, cinema room, bar, swimming pool, football pitch and garden games.

Amenities

Air-conditioning, WiFi, printer, first aid, iron & ironing board. Highchairs and cribs are available upon request.

The Pantry

Exclusively for our staying guests, The Pantry offers tea, coffee, and drinking water all day, along with a microwave, kettle, toaster, and fridge for your convenience.

The Bar

The Chandelier Bar operates during events, offering a selection of local wines, champagnes, branded beers, spirits, mixers and various drinks packages.. The Garden Bar is available for outdoor events.

Bedrooms

The main chateau has sleeping areas for up to 24 people. All bedrooms have king or queen size beds. Three bedrooms contain two beds sleeping up to 4 including one family suite with a shared bathroom. The Coach House apartments sleeps up to 10 people with 5 king bedrooms, 2 bathrooms, lounge, kitchen and dining room. The Garden Suite sleeps up to 5 guests with 2 double bedrooms, one with an optional additional single bed, 1 bathroom, small lounge area and garden terrace.

Bedroom Amenities

All bedrooms are equipped with tea and coffee facilities, hairdryers, luxury bathing products, and towels. Pool towers are provided for staying guests only.

Breakfast & Light Lunch

Breakfast and a light lunch are included in the venue package for all staying guests and are served in the Banquet Hall. Regular breakfast and lunch service runs from 9 AM to 12 PM, while breakfast on post-wedding event days is served at 10 AM.

Frequently Asked

Do you provide catering?

The Château is features an onsite catering and bar team to cater for the duration of your stay.

Can we self-cater?

The Château is a catered venue therefore we do not offer self-catering. External caterers are not permitted

Do you offer menu tasting?

Confirmed bookings receive a complimentary menu tasting (subject to availability)

What are the childrens prices?

Children's prices are an average of 50% less

Is there a bar?

The chandelier bar is the primary bar. The garden bar is available for outside events

Is there a curfew?

The bar is open until midnight on the wedding night with options to extend until 2 am

Can we eat outside?

Outside dining in the courtyard & gardens is available

Do you offer drinks packages?

We offer various drink packages and pre-paid bar options with customisable limits on singles, doubles, shots, and more.

Do you cater for allergies?

We accommodate most allergies & intolerances with advance notice

Can we bring our own alcohol?

If you wish to choose your own wines and Champagnes for the cocktail reception and during the wedding meal, a small corkage will apply. Drinks for the rest of your stay must be purchased from the Château.

Is there onsite parking?

Parking on the estate is available





Frequently Asked

+

Is the venue exclusive?

The Château is exclusively yours for the duration of your stay and is not open to the public.

What is the capacity?

Accommodation: Up to 39 people

Ceremony (Inside): Up to 120 people

Ceremony (Outside): Up to 500 people

Seated Dinner (Inside): Up to 100 people

Seated Dinner (Outside): Up to 500 people

Is there a minimum?

A minimum of 70 adults (plus children) are required.

Is there a wedding planner?

A professional wedding planner from our approved list is required for all weddings

Can we choose our own suppliers?

Yes, your wedding planner will curate a selection of suppliers tailored to you to your requirements to choose from

What's the check-in/out times?

Check-in: Friday 4pm

Check-out: Monday 11am

Is there a payment plan?

The deposit secures the booking and it is non-returnable. Payment plans are available

Are midweek weddings available?

We offer weekend availability only, Friday - Monday

What is there's bad weather?

The Banquet Hall serves as a backup option, seating up to 120 guests for a ceremony and 100 for dinner, while the Drawing Room can accommodate up to 80 guests for a ceremony.

Is a church nearby?

The village has a Catholic church and a Christian church nearby in Montbron (residency requirements apply for legal marriage in France)

Is there a PA system?

The Château does not provide this service; it's recommended to hire a DJ

Are dogs allowed?

Well-behaved dogs are welcome. Maisie, the Château's Cavachon, loves making new friends!

Is there disabled access?

Ground floor accommodation and accessible bathroom facilities available

Is there a swimming pool?

A large swimming pool is available

Are furniture included?

A variety of furniture and props are included in the venue package. For weddings exceeding 100 people, additional will need to be hired

Are fireworks permitted?

Mine fireworks are permitted (only) which shoot a burst of stars or sparks upward from the ground, creating a dramatic, short-lived display



Stays & Amenities

+

Nearby Accommodation

For those who are not staying at the venue, the Château is in a rural location, so accommodation in Marthon itself is limited, but there are many options in surrounding villages and in the nearby city of Angoulême.

We've provided a list of accommodation options on the next page (though this is not exhausted). When searching for accommodation, we recommend checking multiple sites, as options can vary. New listings often appear on: Booking.com, Airbnb, Expedia, Google Hotels

We suggest looking for places between the village of Marthon and Angoulême (including the city), as most taxi services operate from Angoulême (more transport details can be found on the FAQs page). The nearby town of Montbron also offers additional amenities.

To find more options, we recommend using the map feature on these sites to explore the area more thoroughly beyond specific searches.

Villages within a 15 minute drive; Montbron, Saint-Germain-de-Montbron, Mainzac, Chazelles, Vouthon, Feuillade, Grassac, Souffrignac, Hautefaye, Varaignes, Charras, Vouzan, Eymouthiers, Moulins-sur-Tardoire.

Village Amenities

Eateries

Pizzeria: Bouledogue Café

Bakery: La Gourmandine

Emergency

Pharmacy: 4 Rue Grand Rue +33 545702204

Doctor: Ortega José - 5 Pl. de l'Ancienne Gendarmerie, +33 545702388

Beauty

L'atelier de Léa - Hairdresser | L'Hibiscus Nail Artist - Nails | Mademoiselle Cocoon - Beauty

Mail, Petrol Station & ATM

Bank: Crédit Agricole, Le Bourg | Post: O10 Place du Pigeonnier,

Petrol Station: Station essence 24/7

Supermarket

Epicerie Marthonnaise (local), Intermarche & Lidl (Montbron), Carrefour (Soyaux)



Nearby Stays

Villa Paignon



Chalet Suédois Cocooning



Château de Lavaud



Hotel Le Saint Gelais



Mercure Angoulême



Domaine du Châtelard



Domaine des Etangs



Gîte avec piscine Chez Labaurie



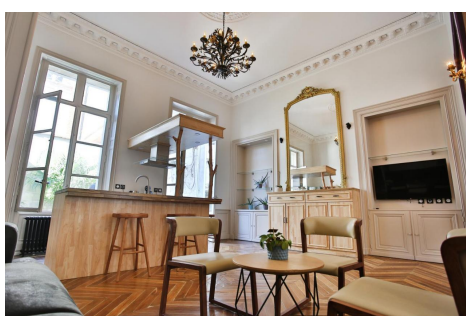
Château de Puymoger



Domaine Du Chatelard



Meublés de l'Arsenal cœur de ville !



Charmant petit dortoir 3 places





Cities & Towns

+

Bordeaux & Saint-Émilion

The heart of France's wine country, Bordeaux boasts world-class vineyards, elegant architecture, and a vibrant riverside setting. Enjoy fantastic bars, restaurants, and a lively atmosphere. Nearby, Saint-Émilion charms with medieval streets, historic wine estates, and stunning views.

La Rochelle & Île de Ré

A historic port city on the Atlantic coast, La Rochelle boasts medieval architecture, a picturesque waterfront, and a rich maritime heritage. Just offshore, Île de Ré offers pristine beaches, fresh seafood, and a chic yet laid-back vibe, perfect for cycling and seaside dining.

Limoges

Just over an hour from the venue, Limoges is a bustling city known for its fine porcelain, excellent shopping, and vibrant dining scene. Visit the renowned food hall to sample regional delicacies and explore its historic quarter.

Angoulême

A charming hilltop city just 30 minutes from the venue, Angoulême features striking medieval ramparts, a grand Romanesque cathedral, and a lively café culture. With a character reminiscent of York, it offers excellent bars, restaurants, and a thriving arts scene.

Cognac

Famous for its world-renowned brandy, Cognac is a picturesque riverside town home to historic distilleries and the elegant Château de Cognac. Discover the secrets of cognac production with tastings and tours in this charming, history-rich destination.

Brantôme

Known as the "Venice of the Périgord," Brantôme is a scenic gem with medieval streets, a peaceful riverside, and authentic French charm—perfect for a leisurely lunch or dinner.

Dordogne

Explore medieval villages, grand Château, and stunning landscapes. Dordogne is rich in history, gastronomy, and offers an enchanting escape into France's picturesque countryside.

Rochefoucauld

Famous for Château de La Rochefoucauld, a stunning Renaissance castle with grand interiors and beautiful gardens.

Restaurants

LES CLUZEUX

LE LION ROUGE

LES SOURCES DE FONTBELLE ❄️



MOULIN DE LA TARDOIRE ❄️

THE GARDEN

AUBERGE DE VARAIGNES



CHEZ PAUL

LA COUR

LA TOSCANE



DOMAINE DU CHATELARD

LA CIGOGNE

AUMI ❄️





Activities

+

Cognac Houses

Tour the renowned Cognac Houses of Hennessy, Martell, Courvoisier, and Rémy Martin. Explore historic cellars, guided by expert sommeliers, and enjoy exclusive tastings.

Vinyard

Southwest France is home to world-class vineyards and exceptional cheeses. Indulge in wine and cheese tastings while touring picturesque estates.

Road Trip

Hire a car for the day and explore hidden villages and scenic countryside. With minimal traffic, driving is a pleasure.

Shopping & Bar Hopping

Pack light—there's plenty of shopping to be done! Spend a day browsing boutiques and enjoy champagne stops along the way.

Tennis, Football & Basketball

Brand-new sports facilities in Marthon are just a five-minute walk from the Château. Tennis equipment is available on-site.

Beach Day

Head to the west coast for a relaxing day on sandy beaches and sparkling waters

Hot Air Ballooning

Float above the rolling vineyards and historic villages for a breathtaking view of the region.

Golf

Play a round at Golf International de la Prèze, a scenic 18-hole course just 20 minutes away.

Kayaking

Paddle along the Tardoire River, just 10 minutes from the Château. The shallow, slow-flowing waters make for a peaceful excursion.

Food Markets

Lively indoor markets in local towns offer fresh produce, handcrafted chocolates, and homemade pastries. Enjoy a coffee and croissant while soaking up the atmosphere.

Cycling

Rent a bike and ride along scenic routes, including the converted rail track from Angoulême to the Château's front door.

Beach Lake

Just 25 minutes away, this sandy lake beach offers safe swimming, free kayaks, and scenic walking and biking trails.

Walking & Hiking

Explore scenic trails, charming villages, and breathtaking countryside, with routes ranging from leisurely strolls to challenging hikes.

Paramotor

For a thrill, soar over the French countryside with a paramotor, just 15 minutes away.

Horseback Riding

Explore the countryside on horseback with guided rides through forests and open fields.

Truffle Hunting in Périgord

Join a guided truffle hunt in the Dordogne, followed by a tasting of this French delicacy.



Au revoir pour l'instant

CHÂTEAU DE LA COURONNE